



DOMINATOR®

**Combination Primary Tillage
Rigid Models (12' and 15')
Folding Models (18' and 21')**



**DOMINATOR®
18' model**

Profit Till – Primary Tillage Systems

Today's Residue Challenges demand a whole new approach. Introducing the **DOMINATOR®**

Created for High Population/High Yields

Years of agronomic advances in the development of high yielding hybrids with strong stalks that resist pests, drought and winds are a boon to corn growers but create seemingly indestructible residue.

The **DOMINATOR®** Primary Tillage System was designed specifically to perform in today's high population/high yielding corn environment. It's a "clean sheet" agronomic design.

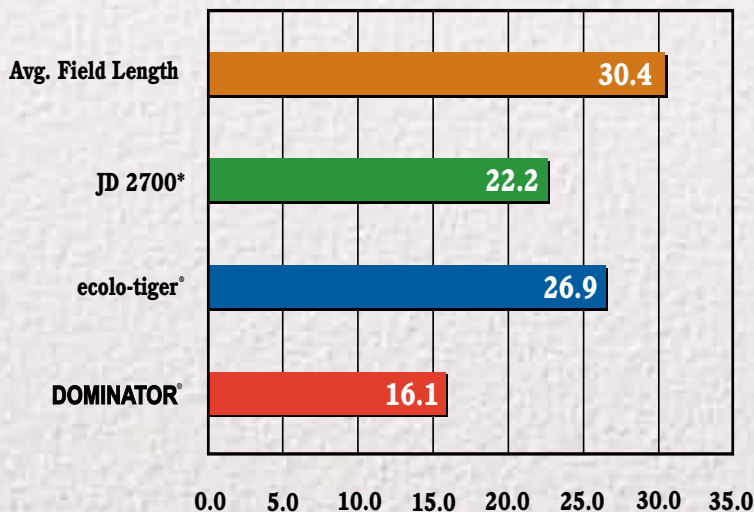
Superior Agronomic Performance

Crop Residue Management

Proper Crop Residue Management is important to higher yields. Incorporating residue into the soil is vital to soil tilth, increases organic matter content and allows rainfall to soak into the subsoil at a faster rate. In the spring, properly sized residue, evenly mixed in the top 4"-6" of soil, facilitates non-stop seed bed tillage and planting operations.

The **DOMINATOR®** cuts and sizes residue more effectively than current tillage tools. A coultter module, equipped with a live-hydraulic down pressure system and ultra-large 25" coultters, provides the cutting force. Spaced every 9" and indexed to the shanks, the coultters cut residue cleanly and don't "windrow" soil and residue like discs, where it can cause plugging in the shanks. An innovative system called the **Residue Manager** positions stalks laterally, ahead of the coultters for an even higher percentage of residue sizing.

Corn Residue Length

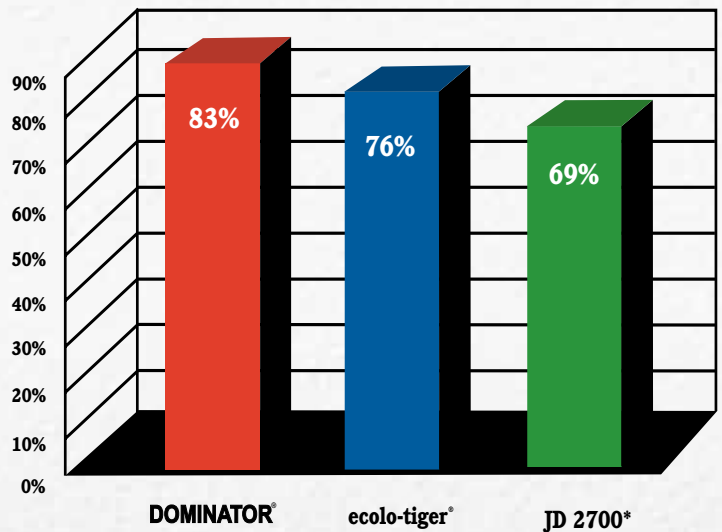


Krause Agronomic Testing, November 2003, seven locations in Minnesota, Illinois and Iowa.

Soil Tilth

Enhancing soil tilth is the most critical factor in attaining maximum yield. The **DOMINATOR®** outperforms current tools by providing more uniform soil tilth with two ranks of shanks, in a "Split-the-Middle" pattern for an effective 18" spacing. This design provides more uniform soil fracture than competitive models with 24" or 30" spacing.

Soil Fracture %



Krause Agronomic Testing, November 2003, seven locations in Minnesota, Illinois and Iowa.

Seed Bed Conditions

The key to boosting productivity and yield potential during planting season is starting with a level soil surface and small clod size. With a smooth field to start with, you'll complete your seed bed tillage faster, and eliminate costly extra trips.

The **DOMINATOR'S®** rationally sequential design places the disc conditioner behind the shanks where it delivers full agronomic benefits. The optional **24/7® Conditioner Reel** provides additional clod sizing and firming, eliminating the extra expense and inconvenience of a "pull-behind" conditioner.

DOMINATOR® Disc Conditioner Advantages

- Reduced Clod Size
- Even mixing of Soil and Residue
- Superior surface levelness
- Faster Seed Bed preparation with higher quality results

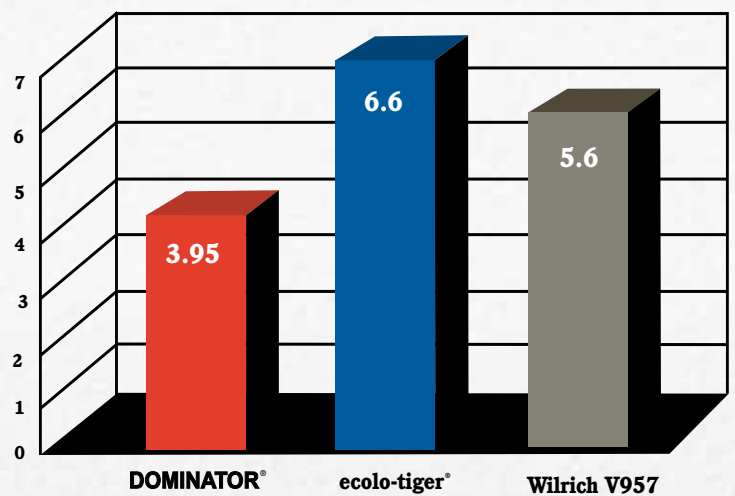
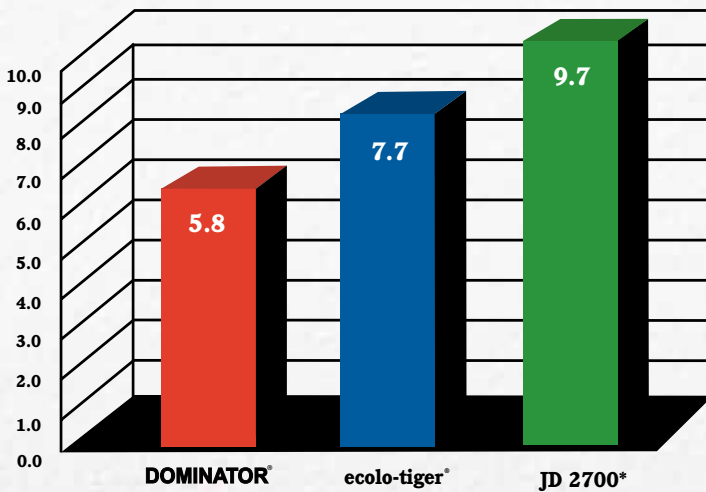


DOMINATOR® 15' model

DOMINATOR® Seed Bed Agronomic Comparisons

Clod Size

Smoothness (Average Depth of 5 Deepest Valleys)



Clod Size	5.8	7.7	9.7

Krause Agronomic Testing, November 2003, seven locations in Minnesota, Illinois and Iowa.

DOMINATOR® Return on Investment

The DOMINATOR'S® superior residue handling and sizing eliminate the need for stalk shredding prior to tillage. With reduced residue size and smoother, more level field finish, only one seed bed tillage pass is usually required. The reduction of two passes in the farming system translates to more profits on your bottom line.*

SYSTEM ECONOMIC COMPARISON*

15' DOMINATOR® and 36' Field Cultivator

vs.

25' Flail Shredder, eco-lo-tiger® 730B and 36' Field Cultivator

Operation Cost Per Acre	Conventional System	DOMINATOR® System	DOMINATOR® Advantage
Stalk Shredding (5.5 mph)	\$ 7.89		
Primary Tillage (5.5 mph)	\$ 17.34	\$ 19.93	
Seed Bed Tillage (6 mph)	\$ 7.98		
Seed Bed Tillage (6.5 mph)	\$ 7.67	\$ 7.67	
Total System Cost Per Acre	\$ 40.88	\$ 27.60	\$ 13.28
1000 Acre Operation			\$ 13,280.00
Equipment Investment			
Stalk Shredder (25' flail)	\$ 30,187.50		
Primary Tillage (eco-lo-tiger® 730B, 15' DOMINATOR®)	\$ 51,660.00	\$ 51,240.00	
Seed Bed Tillage (36' field cultivator)	\$ 41,507.55	\$ 41,507.55	
Total	\$ 123,355.05	\$ 92,747.55	\$ 30,607.50
DOMINATOR® System Net Operational Savings			\$ 43,887.50

* All prices and costs are estimates and believed to be accurate, based on list prices from the latest available information at the time of printing (January 2011).



DOMINATOR® 18' Model

**DOMINATOR®
12' Model**



Step 1

Residue Manager Positions Residue for Positive Cutting

Residue Manager wheels (optional) reposition stalks and residue laterally, just ahead of the coulters, for positive cutting. The 15" diameter wheels are independently mounted and "float" over uneven terrain.



Step 2

Ultra-large Coulter Cut Residue

Coulter module features ultra-large 25" diameter coulters on 9" spacing for improved residue cutting vs. discs. An innovative "live" hydraulic down pressure system allows the operator to set down pressure to match conditions. With constant down pressure the coulters seek the depth that provides optimal cutting resistance. Coulter gangs are mounted with **Rock-Flex** bearing arms for added protection.



Agromatic Steps vs. 3

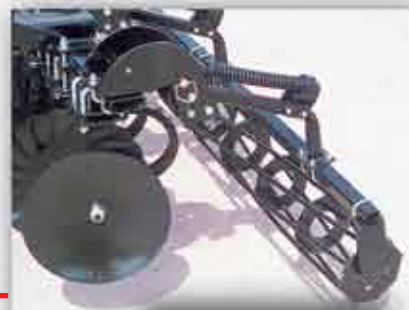
The results far surpass the output of three-function designs which require additional residue sizing or seed bed preparation trips.



Step 5

24/7® Dual Range Conditioner Firms Soil

24/7® Conditioner accomplishes final clod sizing and soil firming with the exclusive ability to select a range of constant down pressure or “float” position to extend the weather/tillage window.



Choose from two agronomic conditioner designs; the Round Spiral Reel provides clod sizing and firming in mellow, loam type soils, and offers better performance in wet conditions. The Flat Spiral reel provides aggressive clod sizing in hard or high clay content soils.

Step 3

Shanks Improve Soil Tilth

“Split the Middle” shank pattern is achieved with two ranks of shanks on 18” spacing. This provides maximum soil fracture and non-stop operation in heavy residue. Choose from all Deep Till Parabolic shanks, a combination of Deep Till and Heavy-Duty Chisel shanks, or all Heavy-Duty Chisel shanks, depending on your agronomic needs.



Step 4

Disc Conditioner Reduces Clod Size and Levels

Disc Conditioner System is hydraulically adjustable to meet varying surface residue requirements.

24” diameter smooth front disc blades on 18” spacing cut clods and provide initial leveling. 24” diameter fluted rear blades on 12” spacing further reduce clod size and level the soil surface. Discs feature individual Rock-Flex mounts for protection with rear mounts reversed to shed residue for non-stop performance.

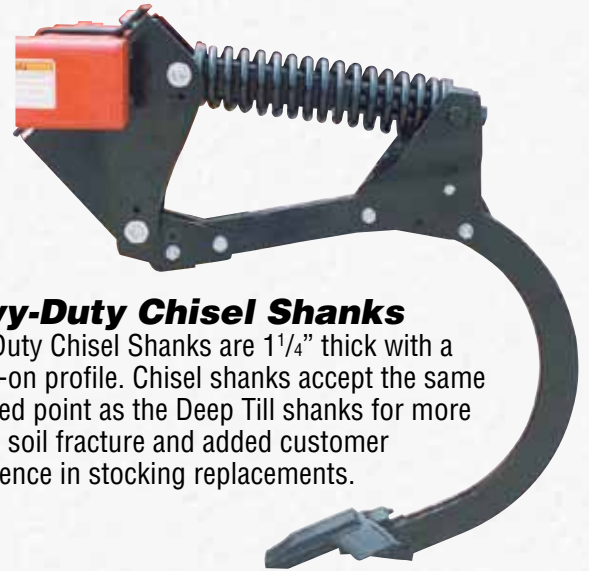


Shanks and Points Manage Soil Compaction



Parabolic Deep Till Shanks

Parabolic Deep Till shanks feature a new lower draft design and a 3000 lb. point load. The spring reset features a generous 22" trip height. Heavy crop residue clears easily with 40" of underframe clearance. Shank mounting arms are spring-steel for added protection in rocky soils. An optional shear-bolt version is also available.

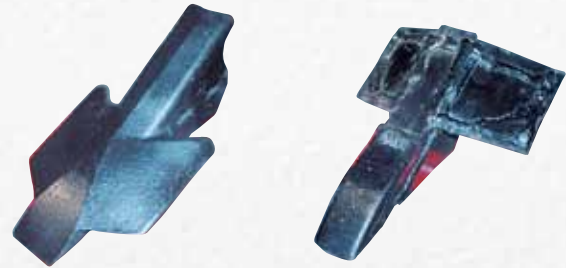


Heavy-Duty Chisel Shanks

Heavy-Duty Chisel Shanks are 1 1/4" thick with a 3" edge-on profile. Chisel shanks accept the same 7" winged point as the Deep Till shanks for more uniform soil fracture and added customer convenience in stocking replacements.

DOMINATOR® 7" Winged Points

7" winged points feature a proven design with downward and rearward swept wings to create a lifting and twisting action that relocates compacted soil layers.



Customer Convenience

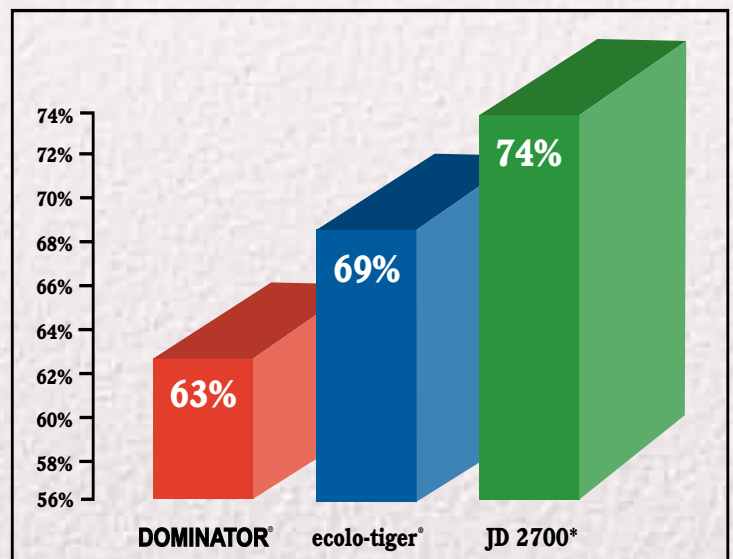
DOMINATOR® shanks also accept popular points like John Deere LaserRip® and DMI tiger® Points for the ultimate in customer convenience. For replacements, choose the point you prefer or have the easiest access to.

Two Ranks of Shanks Provide Maximum Residue Handling



With two full ranks of shanks, none closer than 36" on the same beam, the DOMINATOR® delivers non-stop performance in the highest amounts of tough residue.

% Residue Remaining (corn)



Krause Agronomic Testing, November 2003, seven locations in Minnesota, Illinois and Iowa.

Value Added Features Boost Productivity

Live Hydraulic Coultter Pressure

“Live” hydraulic coultter down pressure adjusts easily up to 1100 lbs. with a convenient front mounted valve. Pressure gauge is visible from the tractor cab. This system automatically positions coultters at the optimum depth for positive residue cutting in varying field conditions.



Tractor Interface Center

Krause's new **Tractor Interface Center** prevents hydraulic hoses from binding in turns and adds operator convenience by swinging out of the way when hitching to the tractor. Storage for owners manual, hydraulic hoses and light hookup are also included. Hose routing chart and color coded hose grips are another time saving feature.



Shank Depth Indicators

Positive Depth indicators allow easy visibility from the tractor cab to determine shank and disc conditioner depth for accurate “on-the-go” adjustment and optimum performance.



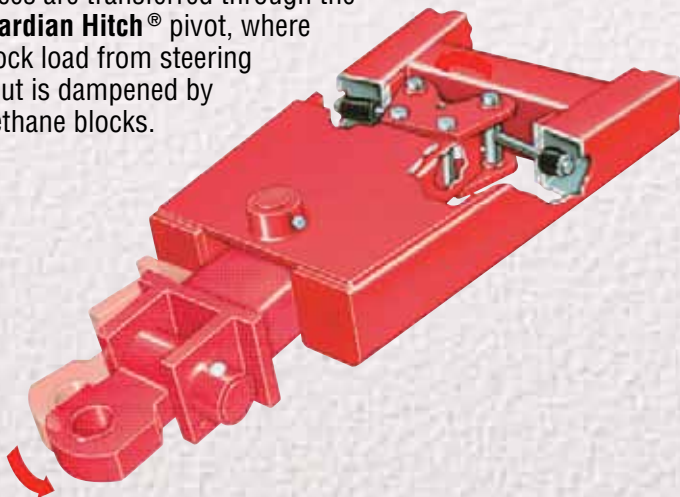
Single Location Remote Depth Stop

Shank depth is controlled conveniently with the crank adjustable depth stop located at the front of the machine. View working depth on the easy to read scale (left).



Guardian Hitch®

Exclusive **Guardian Hitch®** option guards against stress on the tractor drawbar and implement frame. Lateral drawbar forces are transferred through the **Guardian Hitch®** pivot, where shock load from steering input is dampened by urethane blocks.



Walking Tandems

Walking Tandems are standard equipment on all **DOMINATORS®**. Benefits include smoothing out rough ground for consistent working depth and more stable road transport. Heavy-duty 8-bolt hubs are used on all models.





Specifications

Model	Frame Type	No. of Shanks	No. of Subsoil Shanks	No. of Chisel Shanks	Approx. Working Width at Shanks	Approx. Transport Width	Approx. Transport Height	Approx. Shipping Wt.* lbs. (kg)
4850-12	Rigid	7	3	4	10' 6" (3.2m)	13' 10" (4.2m)	6' 6" (1.9m)	11,821 (5,361)
4850-15	Rigid	9	5	4	13' 6" (4.1m)	15' 9" (4.8m)	6' 6" (1.9m)	14,266 (6,470)
4850-18	Folding	11	5	6	16' 6" (5.0m)	14' 10" (4.5m)	12' 3" (3.7m)	19,528 (8,857)
4850-21	Folding	13	7	6	19' 6" (5.9m)	14' 10" (4.5m)	13' 5" (4.1m)	21,223 (9,626)

* Weights shown are for units equipped with combination shanks and no optional attachments
 Recommended Speed of Operation - 4-7 mph

Standard Equipment

Coulters: 25" diameter x 1/4" on 9" spacing
 Coulter Gang: Live Hydraulic Down Pressure System
 Disc Conditioner: Hydraulically adjustable, Parallel Offset design, 24" blades
 Depth Control: Single location remote, screw adjustable
 Hitch: tongue type, 2" pin hole
 LED Safety Light Kit, Safety Chain, SMV Sign
 Shanks: Spring Reset Subsoil Shanks, 3000 lb. point load
 Heavy Duty Spring Chisel Shanks, 1200 lb. point load
 Tractor Interface Center: swinging hydraulic hose stand/tip storage
 Tongue Jack
 Walking Tandem Axles
 Tires: Rigid Models (4) 12.5L x 16, 14 ply
 Folding Models (4) 12.5L x 15 FI (center);
 (1) 9.5L x 15 8 ply per wing

Horsepower Requirements†

12' - 200 to 250 (pto)
 15' - 250 to 325 (pto)
 18' - 375 to 400 (engine)
 21' - 400 to 500 (engine)

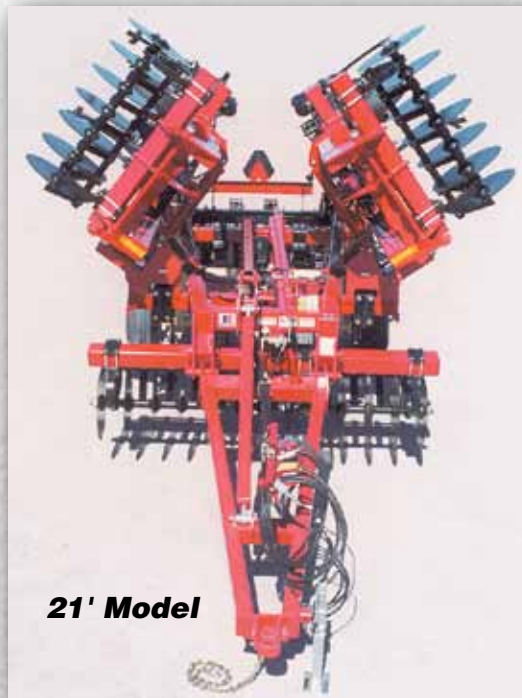
† Estimates only. Requirements will vary by geography and soil type.

Compact Transport Dimensions Reduce Time Between Fields

The two largest **DOMINATOR**® models (18' and 21') are true three-section folding machines. With transport widths that are narrower than many of the tractors pulling them. And with low transport heights, the **DOMINATOR**® boosts productivity by reducing transport time between fields.

Optional Equipment

Shanks: all Spring Reset Subsoil, all Heavy Duty Spring Chisel or all Parabolic Deep Till Shear-bolt Subsoil Shanks (for non-rock areas)
 Points: 3" capped straight
 Tires: High Flotation Tires
 Guardian Hitch®
 24/7® Dual Range Conditioning Reel
 Rear Attachment Hitch (not for use with 24/7® Conditioning Reel)
 Residue Manager Attachment with 15" diameter, individually mounted wheels (**Note: Residue Manager option should not be used in applications where 13" or greater subsoil shank depth is required.**)



21' Model



KRAUSE CORPORATION
 305 South Monroe
 P.O. Box 2707
 Hutchinson, KS 67504-2707
 Phone 620-663-6161 FAX 620-662-5903
 www.krauseco.com

Copyright © 2011 Krause Corporation. Krause, Dominator, 24/7, Guardian Hitch and the "K" logo are registered trademarks of Krause Corporation. Royal Plate Plus is a registered trademark of Prince Manufacturing Corporation.

Continued product improvement is a Krause goal. Therefore, we reserve the right to make any changes in illustrations, specifications, equipment and prices without prior notice and without changes on previous models.

Printed in USA

